

# NLAT Guideline

NLAT, the complete name is “Network Licenses Analysis Tool”, with this tool users could collect data which generated from the Network License Manager. The data type include “float/borrow license information”, “license usage information”, “denied information” etc. With these data, licenses administrator could better manage the licenses.

In this article I will show you how to use NLAT tool by 4 parts, click the title to jump to relevant content. Let's get started!

Launch & Uninstall .....	3
How to launch? .....	3
How to uninstall the program.....	3
Work with NLAT.....	5
Settings.....	11
General.....	11
Language .....	11
Update Interval.....	11
Host Name.....	12
Notification Feature .....	13
OPT feature .....	17
Timeout.....	21
Group function .....	23
Reserve Manager .....	27
NLAT Repair Tool .....	31
Revision Note.....	32



## Launch & Uninstall

**Noted:** The program only support windows 7/windows server 2008 R2 or advanced operating system, both 32 bit or 64bit are available.

### How to launch?

When you first time acquire the package it should be a compressed package, unzip the package to specified path, the installation is finished.








Name	Date modified	Type	Size
 NLMA	4/8/2020 6:06 PM	File folder	
 resources	4/8/2020 6:09 PM	File folder	
 NLAT Guideline.pdf	3/6/2020 3:44 PM	PDF File	1,663 KB
 NLAT.exe	3/24/2020 4:32 PM	Application	55,322 KB
 NLATRepair.exe	3/24/2020 4:32 PM	Application	1,464 KB
 NLATUninstall.cmd	1/20/2020 10:59 AM	Windows Comma...	1 KB
 User_List_Template.xlsx	4/9/2020 11:31 AM	XLSX File	12 KB

Figure 1. What's inside the NLAT folder

### How to uninstall the program

Select "NLATUninstall" from the root directory and run as the administrator.

According to the direction to uninstall the NLAT folder.

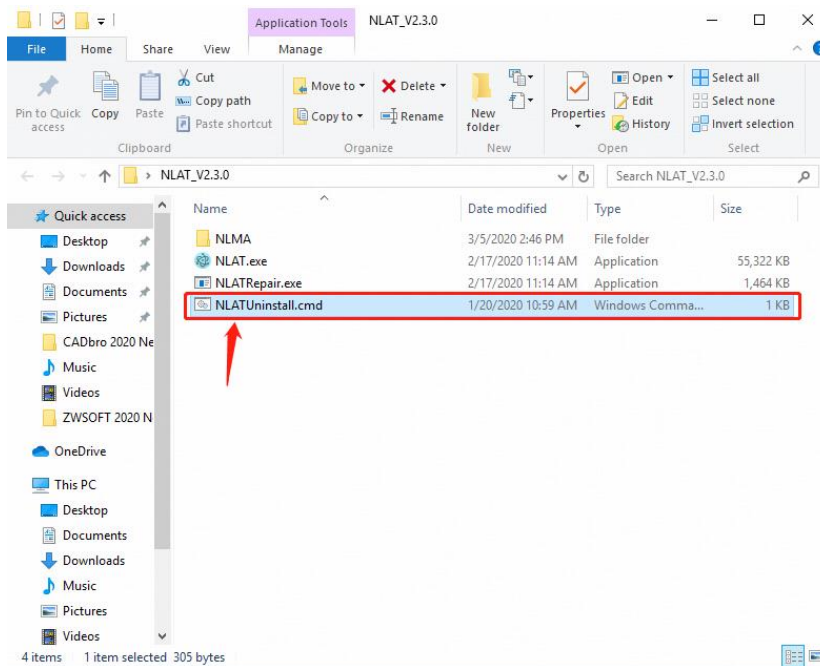


Figure 2. Select “NLATUninstall” icon

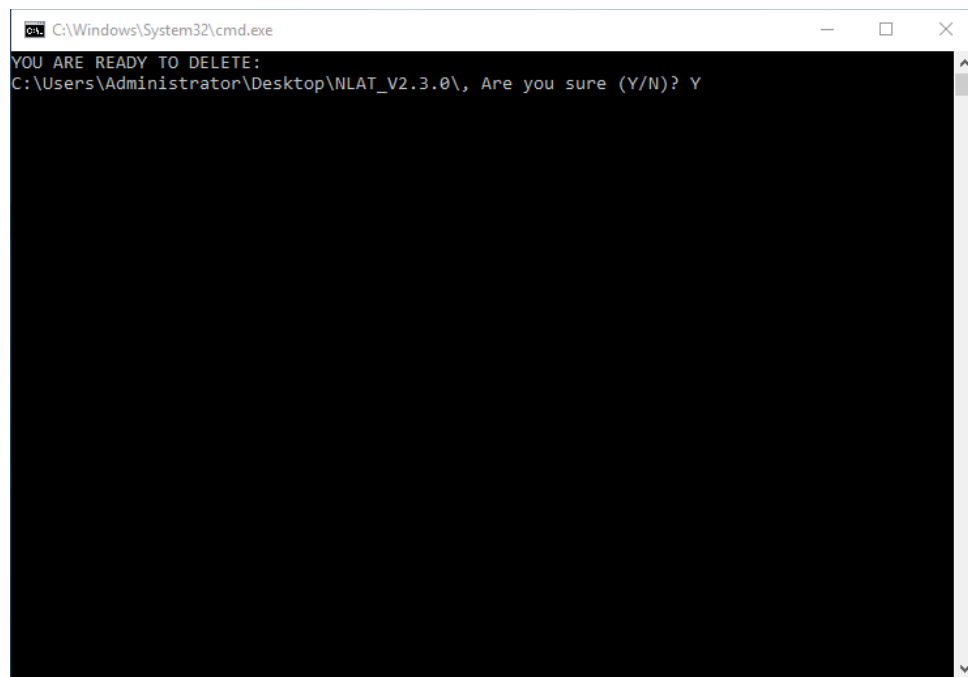


Figure 3. Delete the program as directed

## Work with NLAT

NLAT uses for better monitoring your licenses situation. There are 4 types of data display in NLAT, 4 different tabs represent 4 types of data, click the tab to jump to specified page.

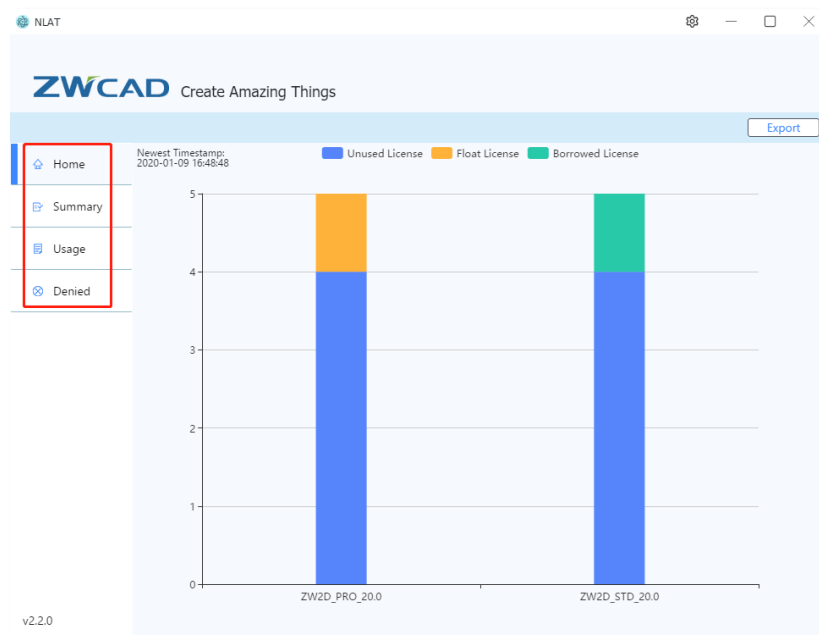


Figure 4. 4 different types of data

Explanation of 4 different data:

**Home:** In this panel you can check total licenses usage in the latest time, including **issued licenses/unused licenses/floated licenses /borrowed licenses** for each version. Put your mouse on the data bar more details information will pop up.

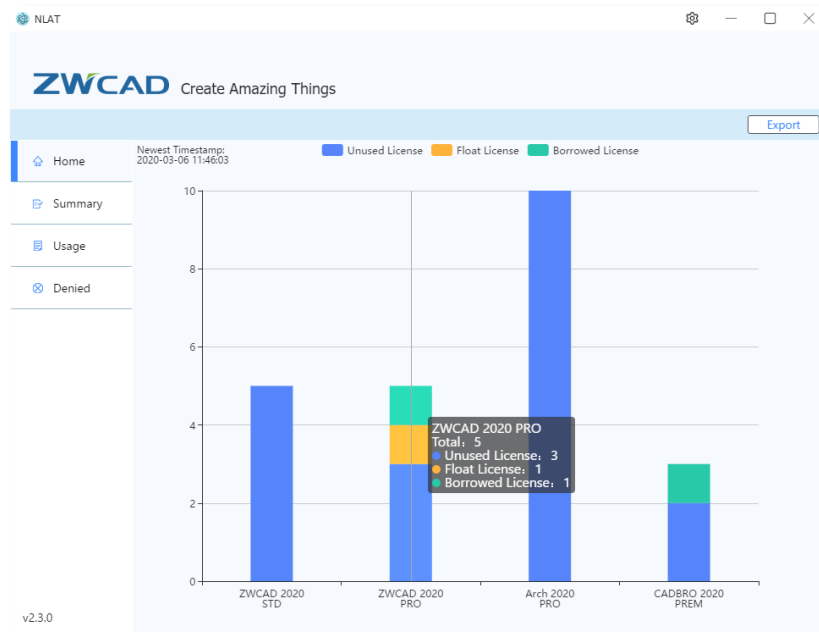


Figure 5. hold your mouse on the bar could see more details

**Summary:** In this page, you can specify a time range to check licenses use summary, including “number of issued licenses”, “usage”.



Figure 6. “Summary” Page

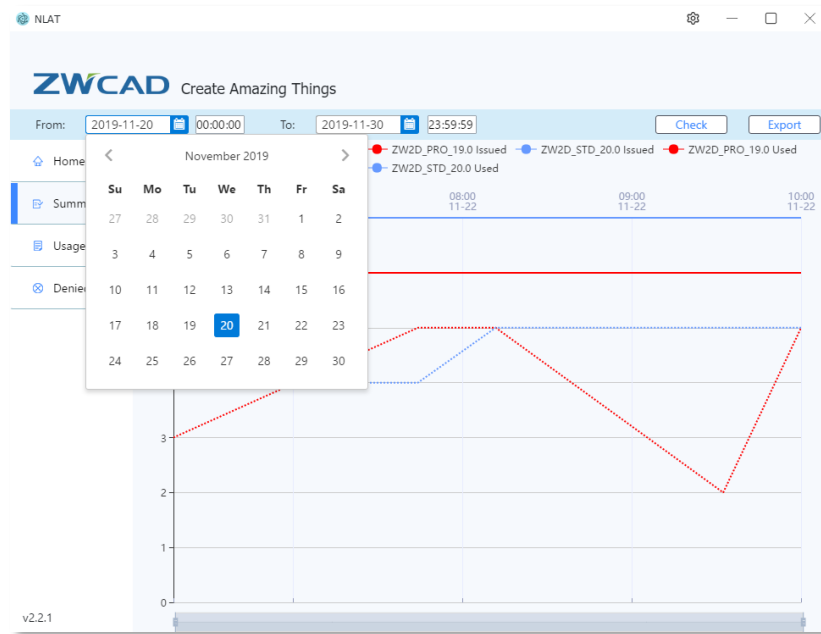


Figure 7. Time filter

If you only want to check licenses situation of single product, try to use product filter to choose product you are looking for.

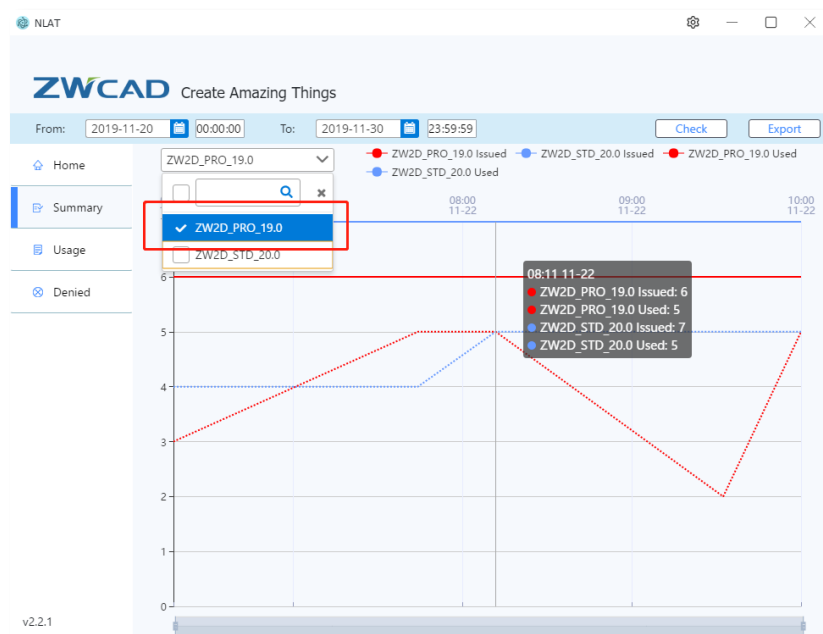


Figure 8. Use product filter to choose product you want to check

**Usage:** This page shows the total use hours for each user, different color could recognize float or borrow status. If you hover you mouse on the data bar, more detail information will show up.

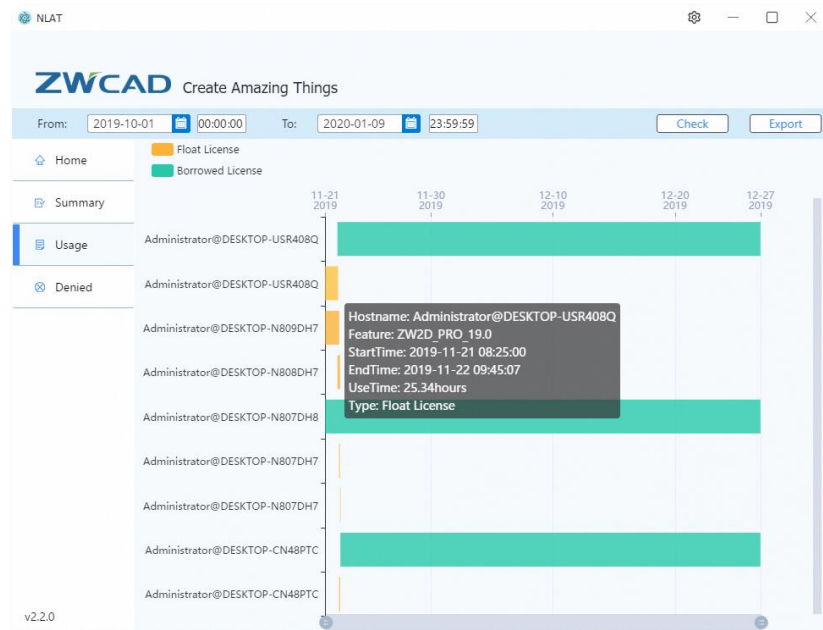


Figure 9. "Usage" page

**Denied:** When applicants fail to acquire license from the Sever, the refuse information will show in this chart.



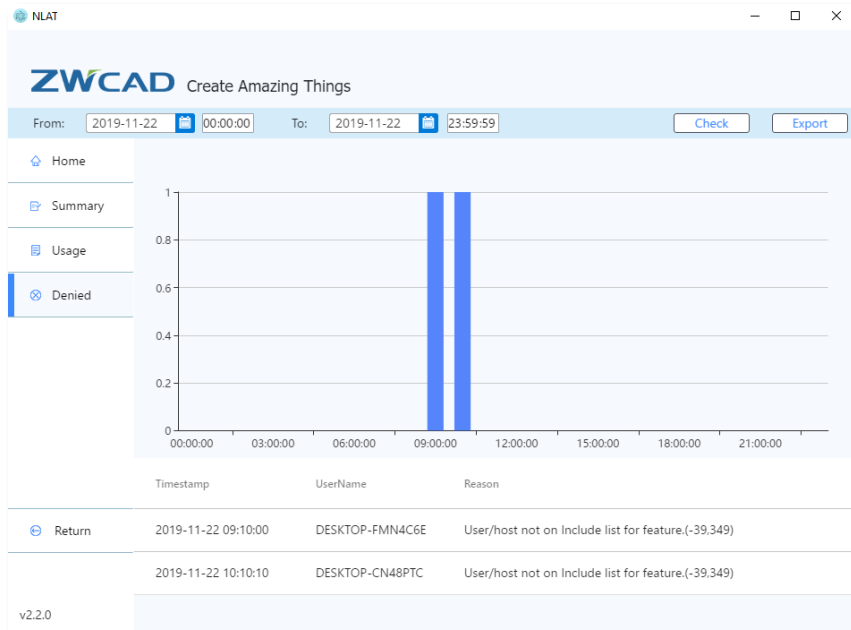


Figure 10. "Denied" page

If you are the first time to open NLAT, the data may not show immediately, try to click the "Home" button to refresh it. Actually all the tabs on the left side have refresh functions.

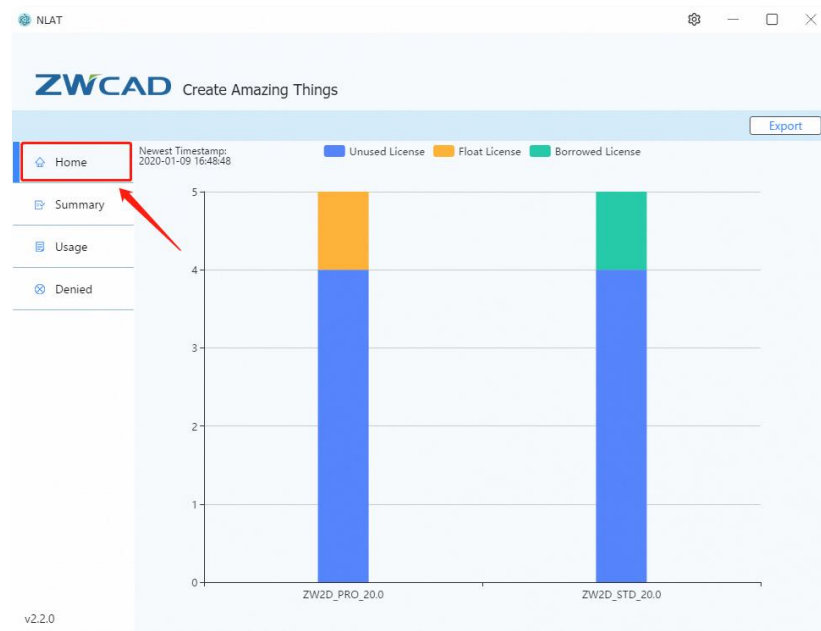


Figure 11 click the "Home" button to refresh data

Apart from observing data, NLAT is also available to export all these data to an excel file, click “Export” button at the right side to export the data.

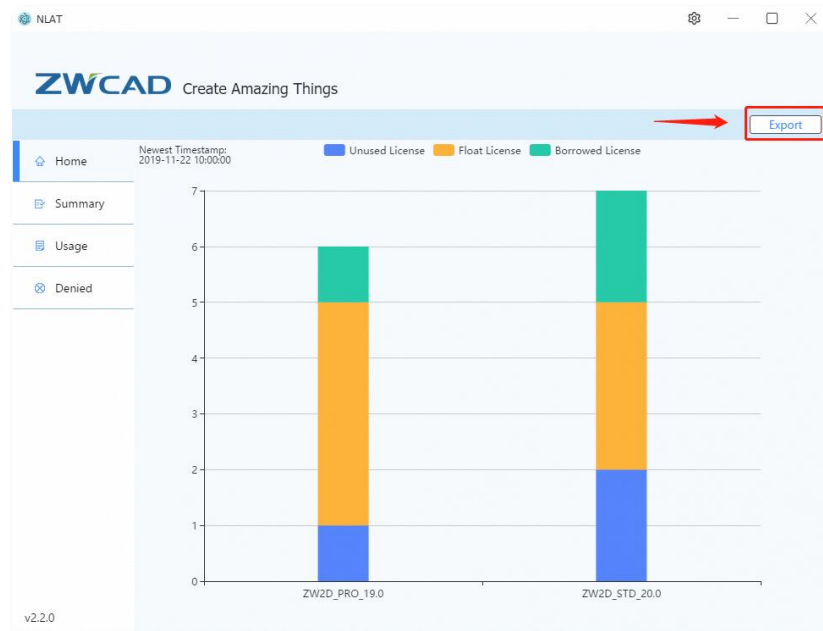


Figure 12. click the button to export data

## Settings

In this part we will introduce you some basic settings. You can find the setting button on the right top corner.



### General

#### Language

6 language version to be chosen: English, Traditional Chinese, Korean, Japanese, Spanish, Simplify Chinese. The default language is English.

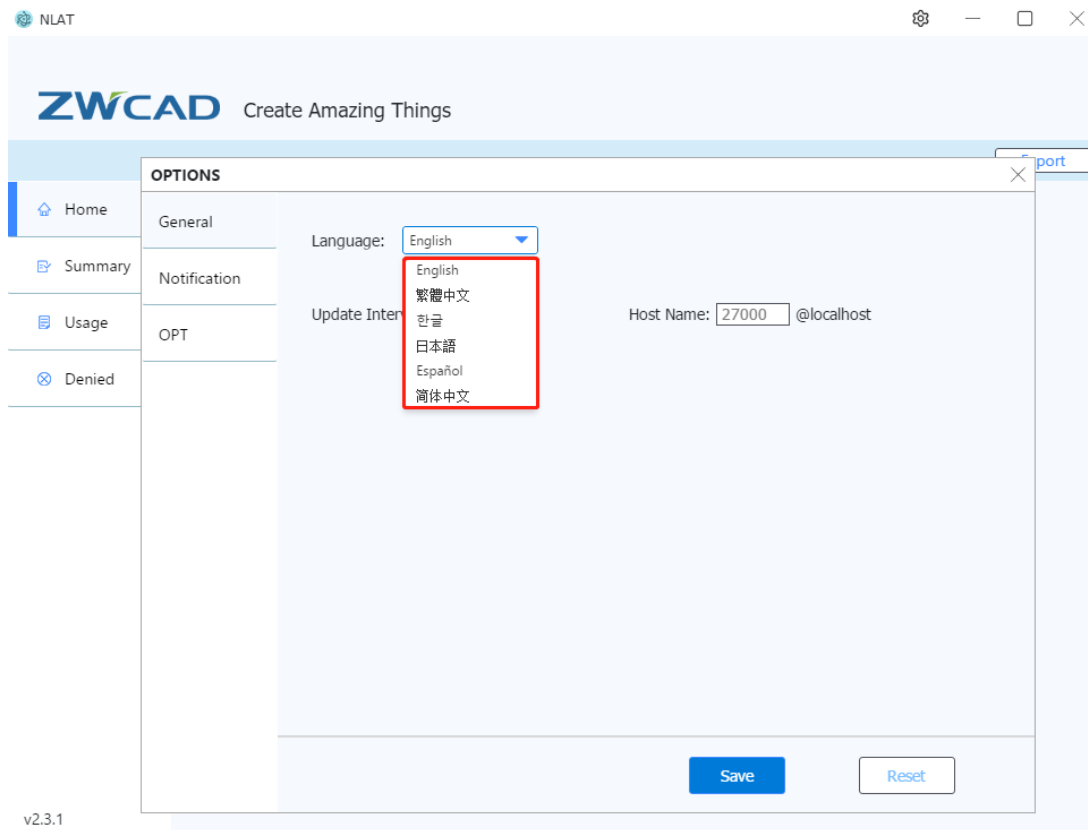


Figure 13. Language option

#### Update Interval

Update Interval use for controlling data update period and log information update period. Default is 10 minutes, minimum unit is 1 minute and maximum unit is 100 minutes.

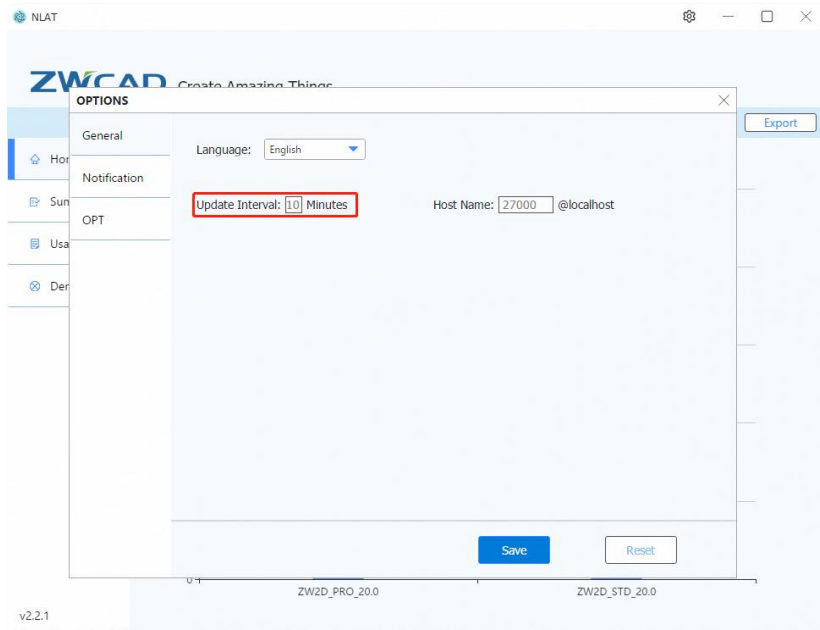


Figure 14. Update interval option

## Host Name

Mostly the Network License Manager default port is 27000, if user have changed to another port, set the new port number here.

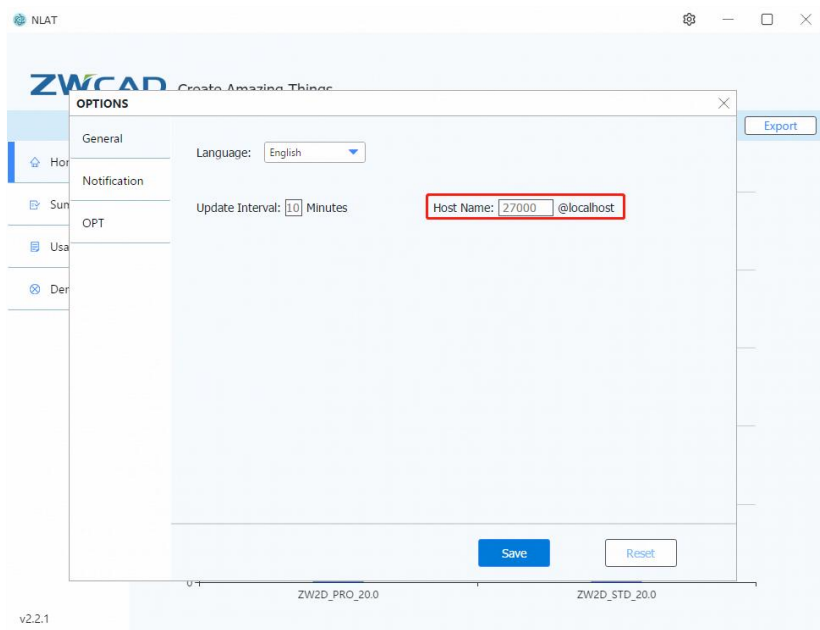


Figure 15. Host Name option

## Notification Feature

Administrator could set up a bottom line of usage of license node. When the node usage reach bottom line NLAT will automatically send a warning email to specified recipients to remind them focus on the usage situation.

Following steps instruct you to set the Notification configuration:

- Open the settings dialog
- Select Notification tab on left panel

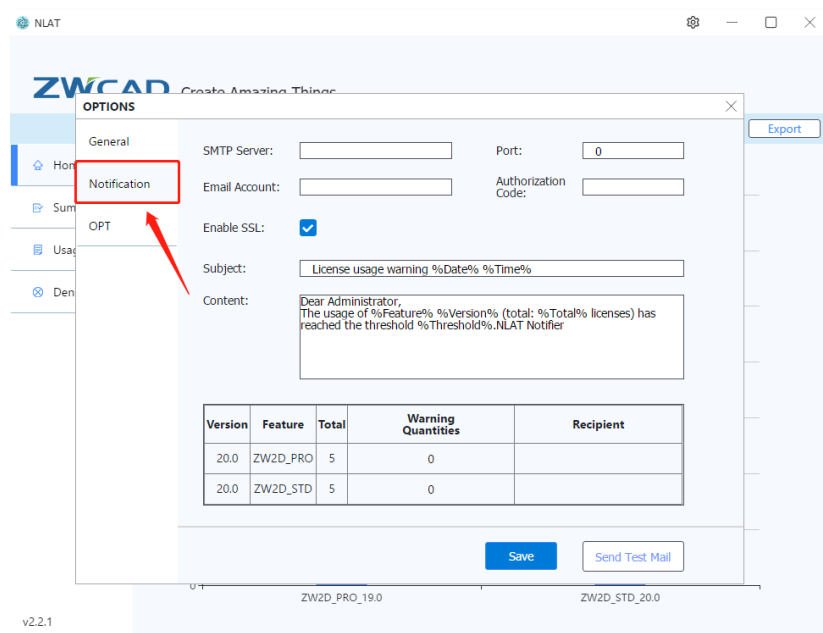


Figure 16. Notification setting panel

- To set up sender information, include SMTP server, server's port, email address, email password or code. These information could be found in your email homepage.

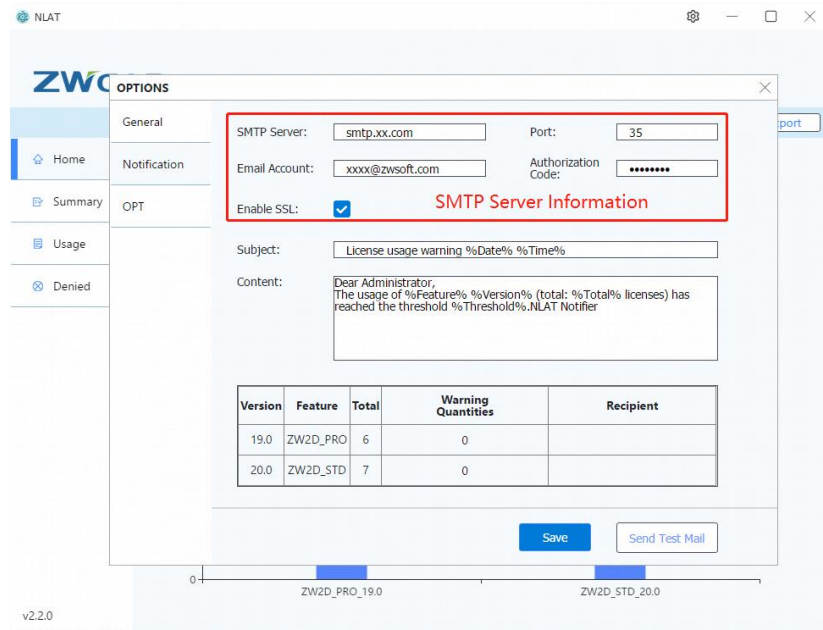


Figure 17. Set up SMTP information

- Email subject and content can be customized or use the preset template, please noted the field “%XX%” is associated with the real data, make good use of these fields.

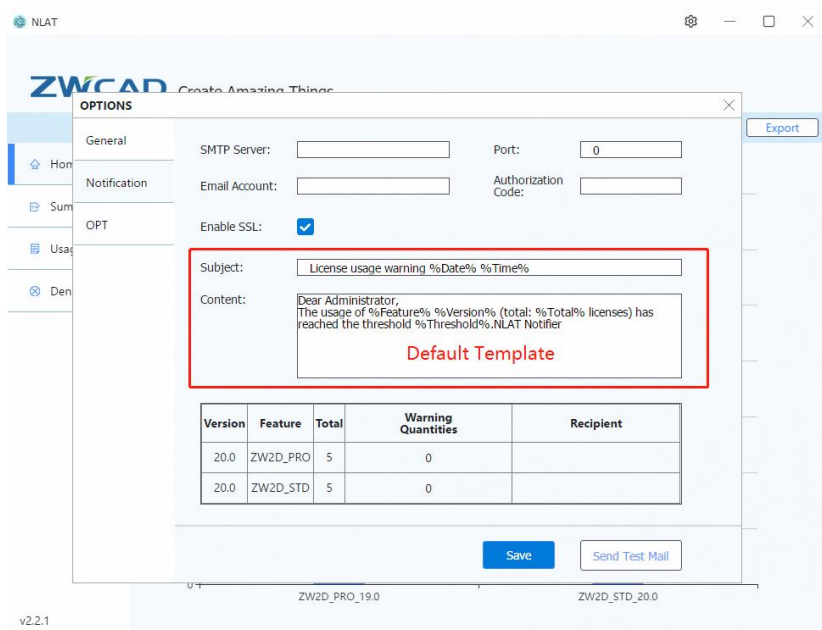


Figure 18. Set up email content

- Set the threshold for node usage and email recipient, the recipient could be more than one, use the comma to separate different email address.

Version	Feature	Total	Warning Quantities	Recipient
19.0	ZW2D_PRO	6	5	David@zwsoft.com
20.0	ZW2D_STD	7	5	Mary@zwsoft.com

Figure 19. Set threshold and recipient information

- Click “Save” to save all the configuration once finish the setting

The screenshot shows the NLAT Options dialog box with the Notification tab selected. The configuration includes:

- SMTP Server: smtp.xx.com
- Port: 35
- Email Account: xxxxx@zwsoft.com
- Authorization Code: \*\*\*\*\*
- Enable SSL: ☒
- Subject: License usage warning %Date% %Time%
- Content: Dear Administrator, The usage of %Feature% %Version% (total: %Total% licenses) has reached the threshold %Threshold%. NLAT Notifier

The table at the bottom of the dialog shows the following data:

Version	Feature	Total	Warning Quantities	Recipient
20.0	ZW2D_PRO	5	5	David@zwsoft.com
20.0	ZW2D_STD	5	5	Mary@zwsoft.com

A red arrow points to the 'Save' button at the bottom right of the dialog.

Figure 20. Save the configuration

- Send test email to check if configuration is correct, the recipient will receive a test email if the setting is correct.

NLAT

# ZWCAD

## OPTIONS

Home

Summary

Usage

Denied

General

Notification

OPT

SMTP Server: smtp.xx.com

Port: 35

Email Account: xxxx@zwsoft.com

Authorization Code: \*\*\*\*\*

Enable SSL: ☒

Subject: License usage warning %Date% %Time%

Content: Dear Administrator,  
The usage of %Feature% %Version% (total: %Total% licenses) has reached the threshold %Threshold%.NLAT Notifier

Version	Feature	Total	Warning Quantities	Recipient
19.0	ZW2D_PRO	6	5	David@zwsoft.com
20.0	ZW2D_STD	7	5	Mary@zwsoft.com

Save

Send Test Mail

0

ZW2D\_PRO\_19.0

ZW2D\_STD\_20.0

v2.2.0

Figure 21. Send test email



## OPT feature

OPT feature used to control users' permission of acquiring node. With this feature the administrator could control whether the applicant have permission to float or borrow the licenses.

Following is the step to set the OPT configuration:

- Open the settings dialog
- Choose the OPT tab on left panel

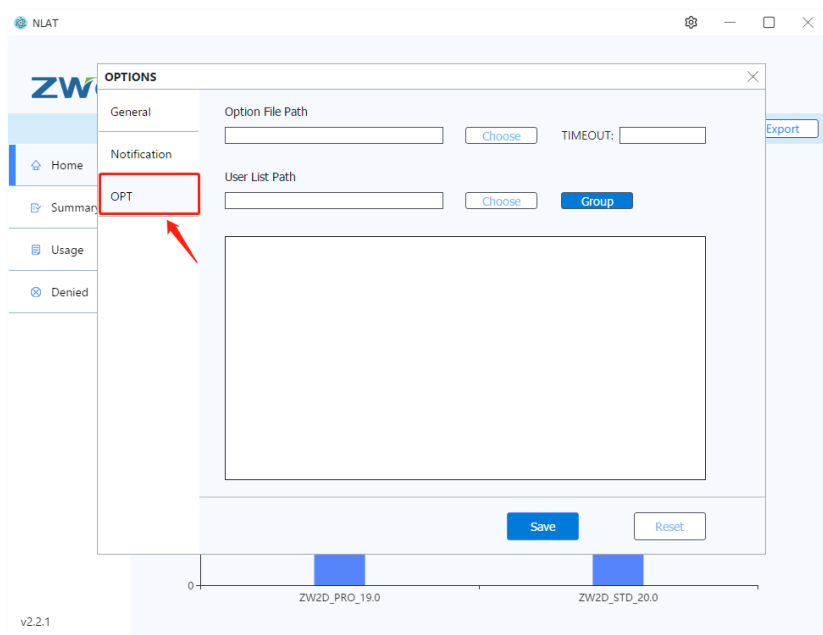


Figure 22. OPT function

- Locate the "zwflex.opt" file, the default path is C:\Program Files\ZWSOFT\Network License Manager 2020 ENU\zwflex.opt (Depend on where you install the NLM)

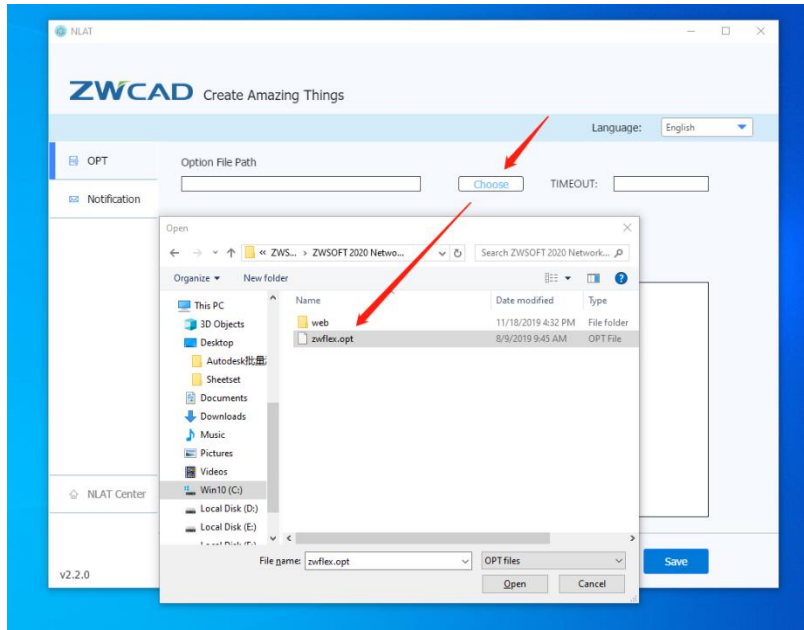


Figure 23. Import the “zwflex.opt” file

- Import the “User List” file. This file should be created by users themselves. Some important factors must be included in the files: **Product Name**, **Licenses code**, **User name**, **Full-Computer name**.

Below is the template of User List, input the information with correct format.  
This template will be included in the NLAT folder.

*Product Name	License Code
2dpro	XXXX-XXXX-XXXX-XXXX-XXXX-XXXX
3dstd	XXXX-XXXX-XXXX-XXXX-XXXX-XXXX
*Username	Full-Computer name
User1	CUSTOMER COMPUTER NAME
User2	DESKTOP-XXXXXXX
User3	DESKTOP-XXXXXXX
*Following are the Short name for the product name, please according to rule to input your <b>Product Name</b> correctly.	
ZWCAD STANDARD:2dstd	
ZWCAD PROFESSIONAL:2dpro	
CADBRO Mini:cbmini	
CADBRO STANDARD:cbstd	
CADBRO PREMIUM:cbprem	
ZW3D LITE:3dlite	
ZW3D MINI:3dmini	
ZW3D STANDARD:3dstd	
ZW3D PROFESSIONAL:3dpro	
ZW3D PREMIUM:3dprem	
ZW3D 2X-MACHINING:3d2xm	
ZW3D 3X-MACHINING:3d3xm	
ZW3D ACAMERIC PREMIUM:3dad	

Figure 24. User list template

- When the file is finished, import it into NLAT, the list will show in OPT panel.

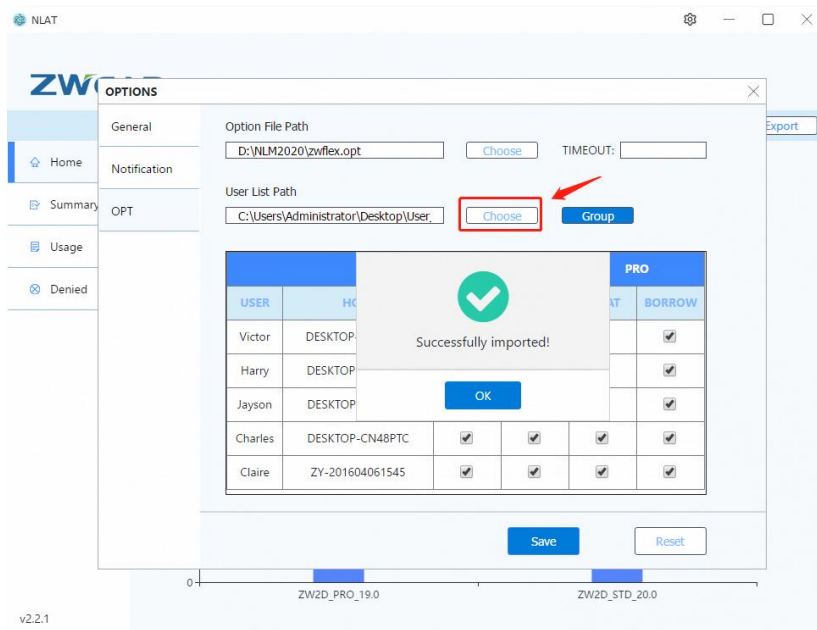


Figure 25. Choose "User list" to import

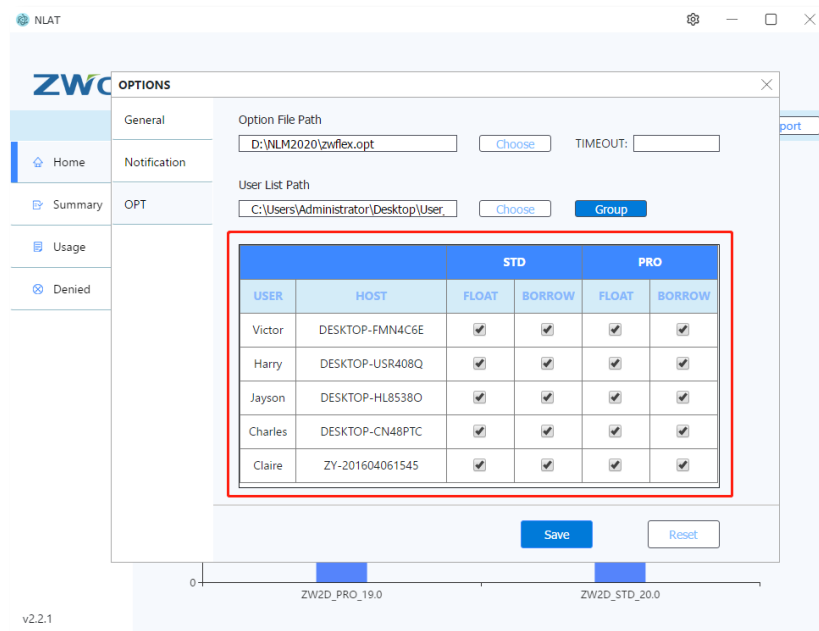


Figure 26. User list will display in the panel automatically

- Check the box to assign different permission to different users. The users who are not in the list will not be affected by the rule set in OPT panel, they have full permission to get licenses from the server.

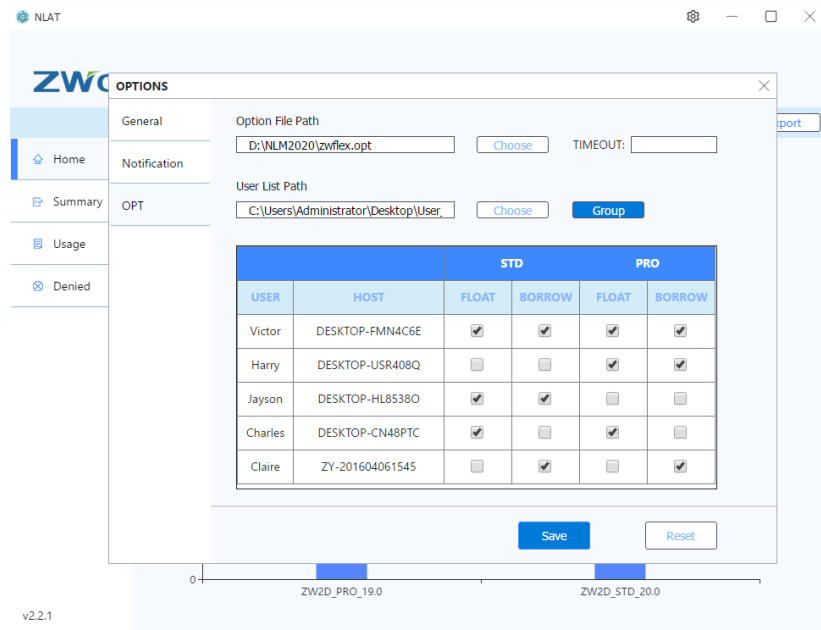


Figure 27. Check boxes to assign permissions

Here are the rules of the checking method:

“√” means allow the user to acquire corresponding permission, unchecked means ban the user to acquire corresponding permission.

Take below as an example:

		STD		PRO	
USER	HOST	FLOAT	BORROW	FLOAT	BORROW
Victor	DESKTOP-N807DH7	<input checked="" type="checkbox"/>	<input type="checkbox"/>	<input type="checkbox"/>	<input checked="" type="checkbox"/>

Figure 28. Permissions rule example

This permission rule means:

Victor (DESKTOP-N807DH7)

allow to acquire STD float node but not allow to borrow STD node

allow to borrow PRO node but not allow to acquire PRO float node

If check both Float or Borrow in STD and PRO, it will prior to obtain PRO node (If you have both STD and PRO licenses).

- Click “Save” button to save opt file, once the prompt pop up means the setting already been saved.

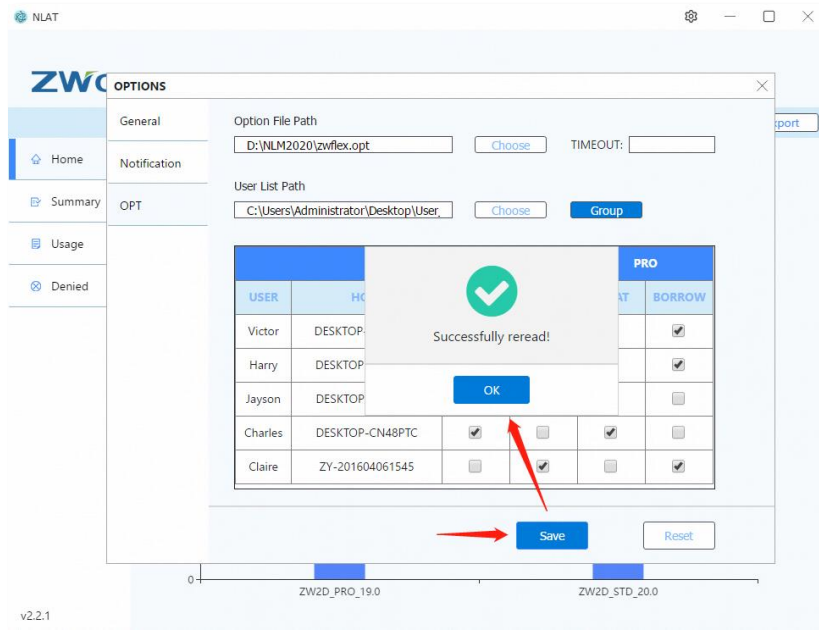


Figure 29. Save the configuration

- Now the users could apply license base on the rules we set.

## Timeout

"Timeout" feature enables license server to automatically retrieve floating license which user got from the server but not use for now. In this way theoretically all the nodes can be fully utilized.

How the server define license as "not in use" status? The definition of "not in use" is that user doesn't invoke any commands during the specified time. For example, if I set the timeout value to 900(s), it means that if you don't use any commands in 900 seconds, the server will judge your license is in "not in use" status.

It's easy to use this feature, input the timeout value(the minimum number is 900, if you input any number less than 900 will count as 900.) and click "Save" button, when the "Successfully reread" window pop up, the feature start to take effect.

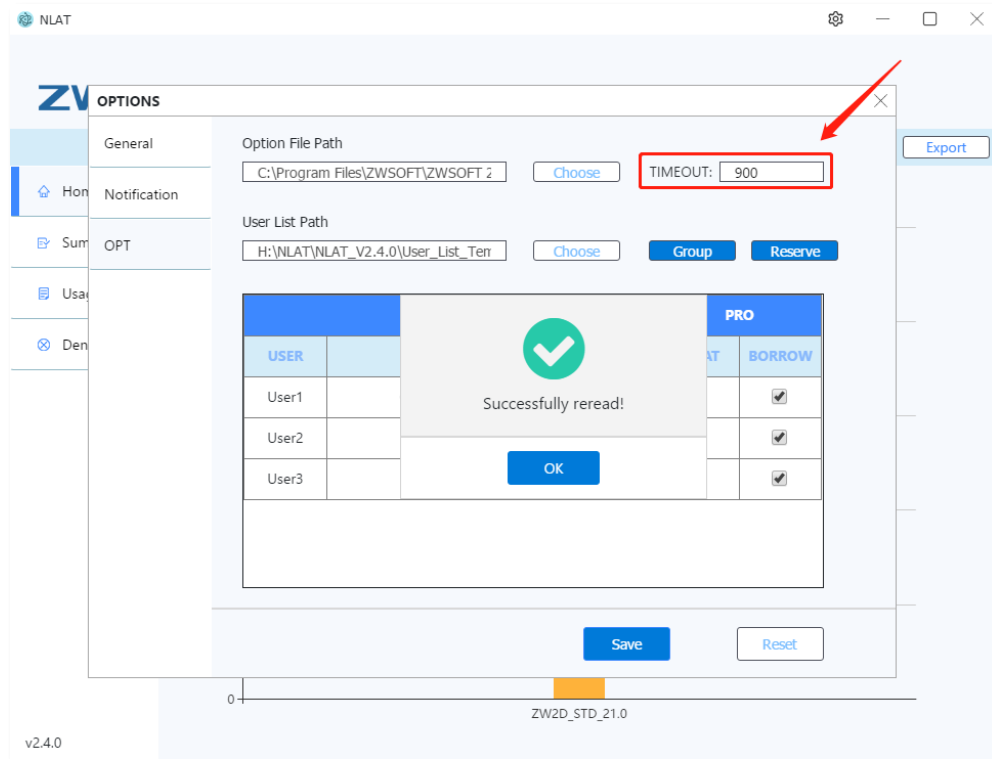


Figure 30. Set timeout value and click “Save” button

Under this situation, if user A doesn't activate any commands in specified time, the server will define user A's license as “not in use” status. At this moment if all nodes in server are being used and a new user want to apply for license, server will retrieve user A's license automatically and give to the new user.

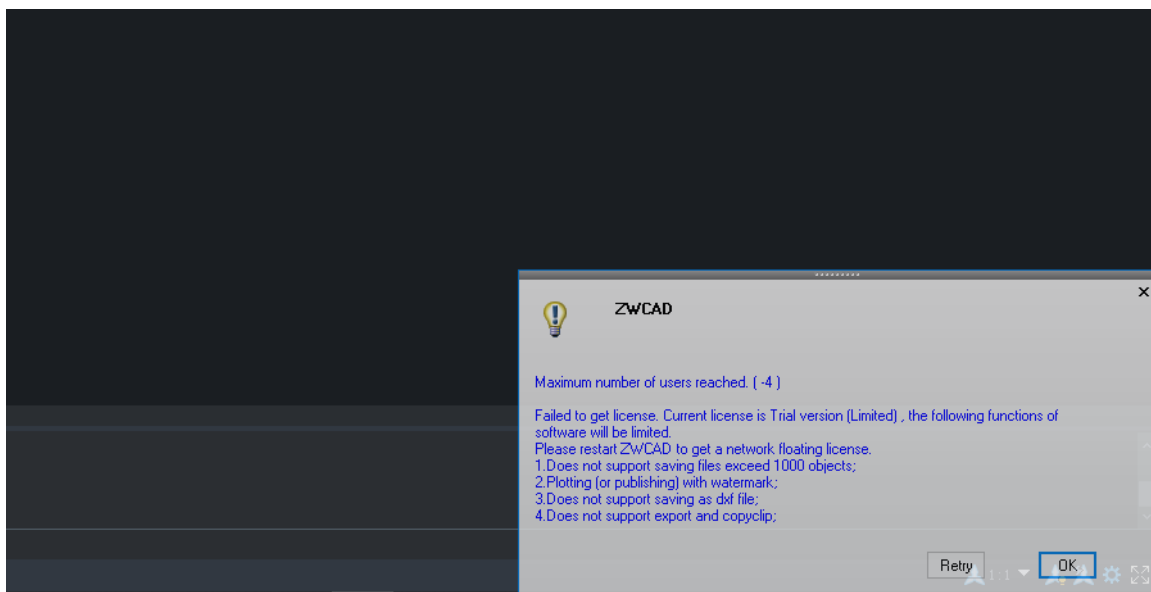


Figure 31. Prompt window will pop up when the old user reuse the software

\*Please noted even the user doesn't use any commands in specified time, their license will not be "actively" taken back by the server, only when the nodes are fully used and a new user apply for license, the original user's license which define as "not in use" will "passively" switch to the new user.

## Group function

We recommend administrator using "group" function to manage users when there are numbers of users.

Here is the method to use "group" function:

- Click the "group" button in OPT panel to enter the group manager panel

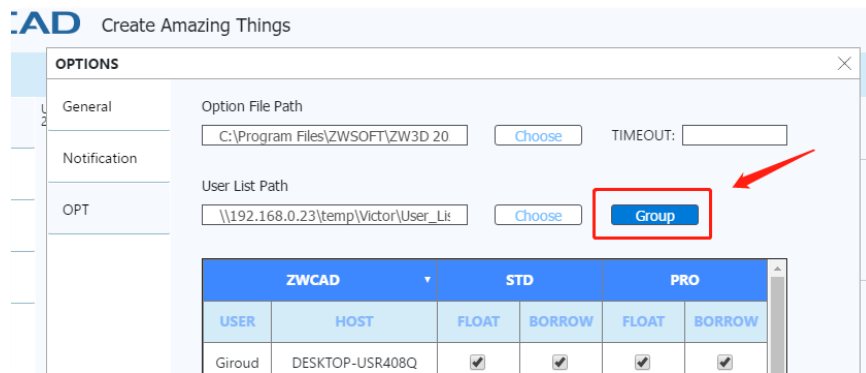


Figure 32. Enter group manager to create group

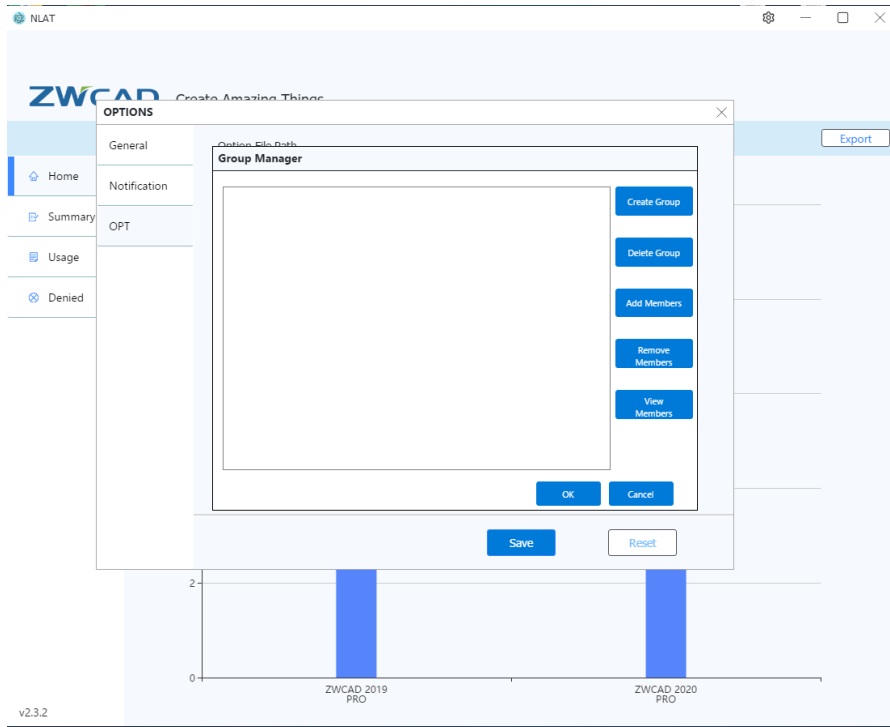


Figure 33. Select "Create Group"

- Click "Create Group" to create a new group. Choose users as the group members and give group a name, click "Confirm" the group is created now.

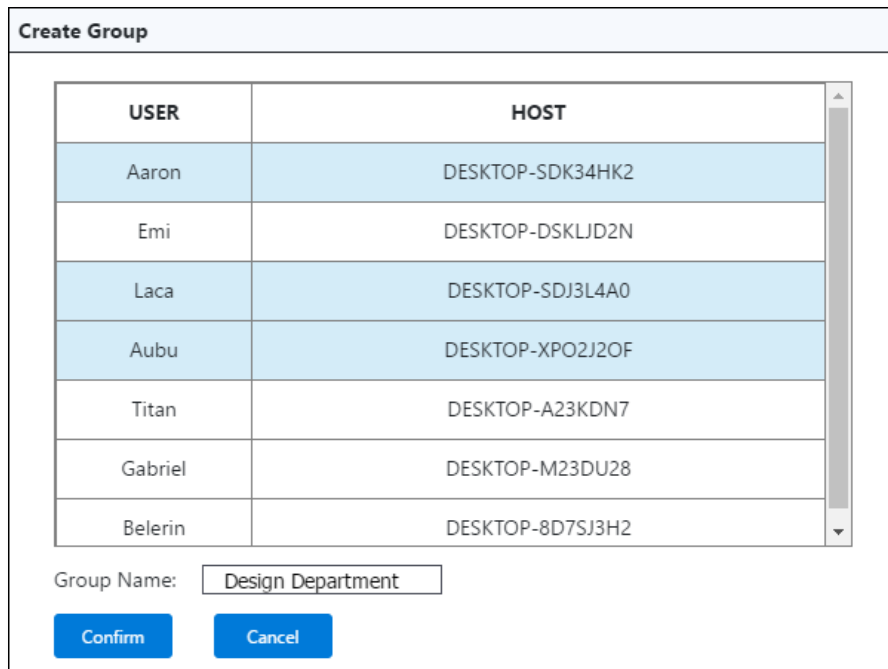


Figure 34. choose users and give a name to the group



- In the “Group Manager”, there are other features, like “Delete Group”, “Add Members”, “Remove Members”. etc. It's quite easy to use, just follow the instruction to execute the actions.

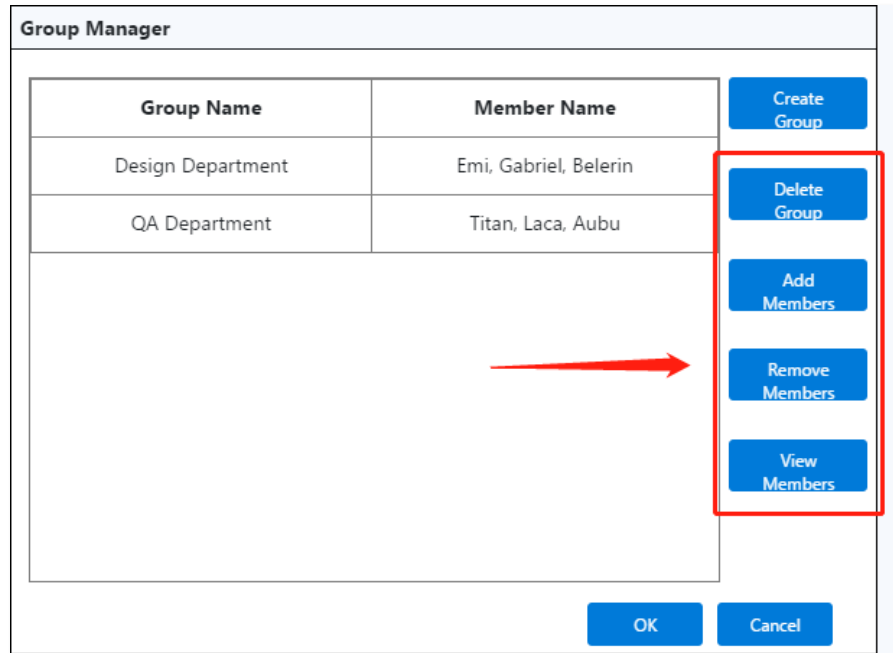


Figure 35. Other features in group manager

- Quit the group manager, we can find the group we just created are listed in the OPT panel, now we can assign the permission to the group members.

OPTIONS

General

Notification

OPT

Option File Path

C:\Program Files\ZWSOFT\ZWSOFT 2

Choose

TIMEOUT:

User List Path

H:\NLAT\NLAT\_V2.3.3\User\_List\_Terr

Choose

Group

ZWCAD

PRO

USER	HOST	FLOAT	BORROW
GROUP	QA Department	<input checked="" type="checkbox"/>	<input checked="" type="checkbox"/>
GROUP	Design Department	<input checked="" type="checkbox"/>	<input checked="" type="checkbox"/>
Aaron	DESKTOP-SDK34HK2	<input checked="" type="checkbox"/>	<input checked="" type="checkbox"/>

Save

Reset

Figure 36. The groups display in the OPT panel.

### More Tips

- 1.Click the “STD” or “PRO” on the top of the form could check all checkbox in one time
- 2.”Reset” button enables users to clean the form.

## Reserve Manager

Reserves specified number of licenses for a specific user or group.

Here is the method to use “group” function:

- Click “Reserve” button to enter “Reserve Manager”( hereinafter called the ‘RM’)

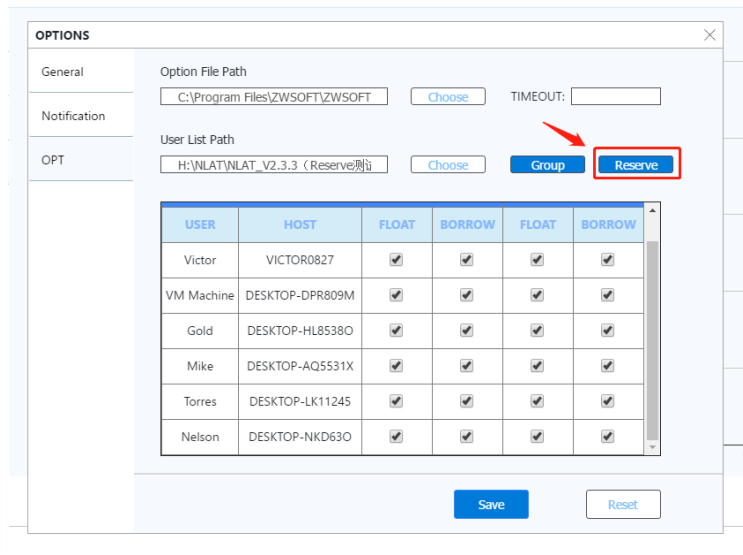


Figure 37. Click “Reserve” to enter RM

”

- The information in RM are read from the “userlist”, include the version definition, username and host name. If there is a group created in OPT panel, it will display in the RM as well.

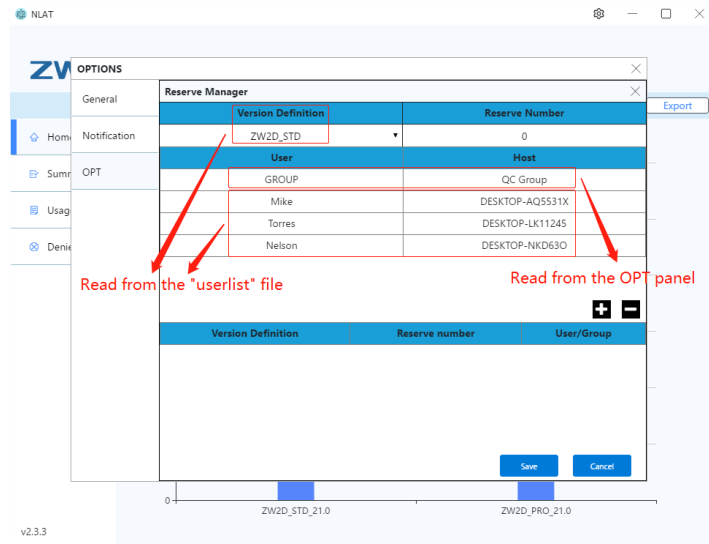


Figure 38. The information is read from the "userlist" file

- Now let's start to create a reserve rule by selecting information, first choose the version, if you have more than 2 products in the server, you can use drop-down list to choose product.

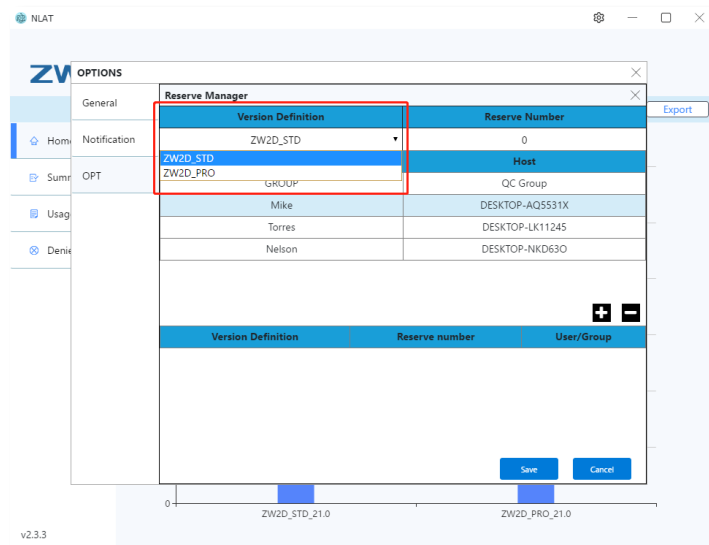


Figure 39. Choose product version

- Then input the node number you want to reserve

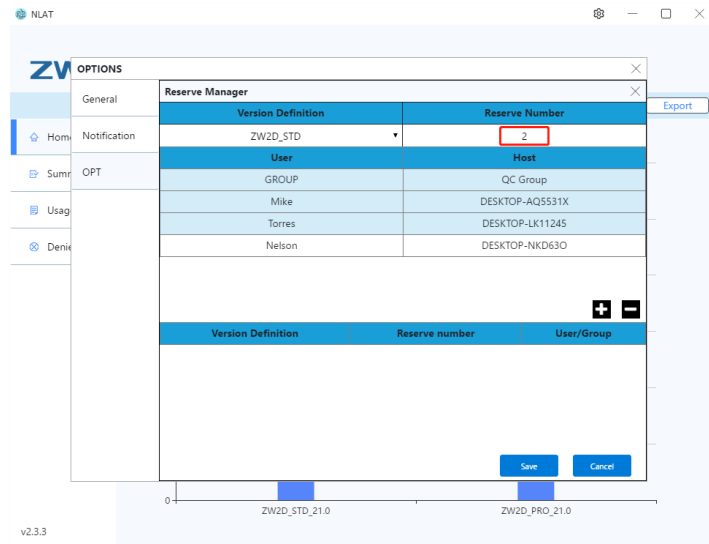


Figure 40. Input the number of reserve nodes

- Click the username or host name, you can select one or more user, the nodes will be reserved to the selected user (the background become cyan color for the selected users).

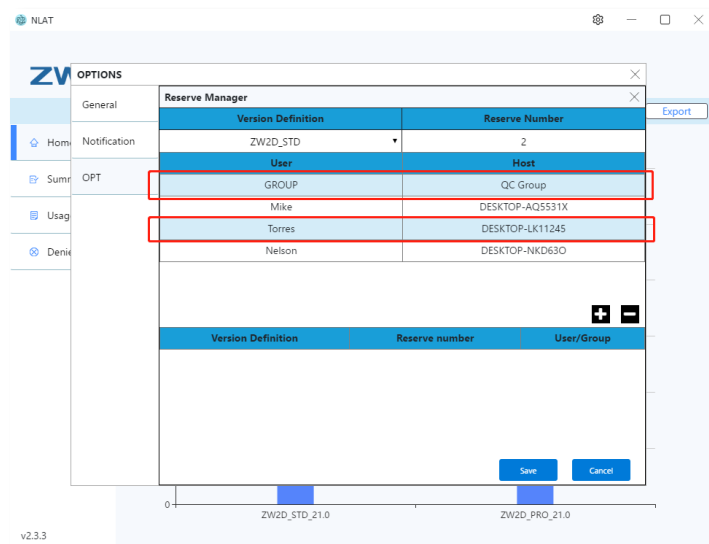


Figure 41. Choose one or more user/groups

- After you select "Version Definition", "Reserve Number", "User/Host", Click the "+" button to generate the rule, and the rule will display in the below of the manager. If you want to delete the rule, just select the rule and click "-" button.

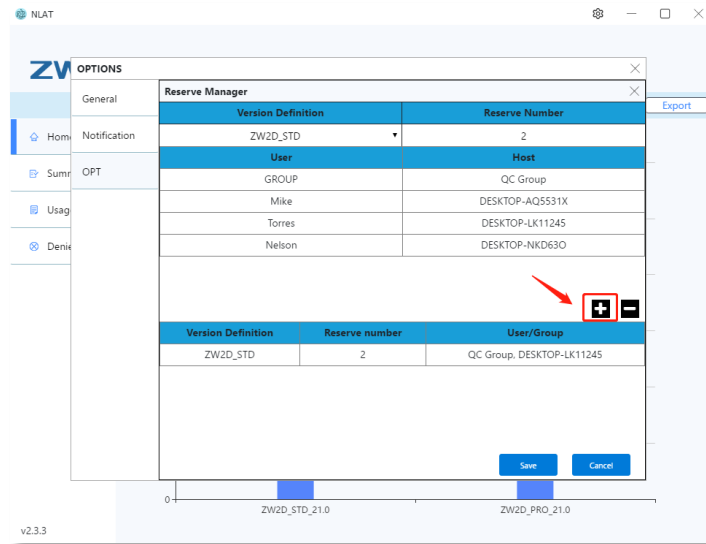


Figure 42. Click “+” to generate rule

- Take below rule as an example, the meaning of the role is that reserve 2 ZWCAD standard version nodes to the group “QC group” and user Torres (Host name DESKTOP-LK11245).

Version Definition	Reserve number	User/Group
ZW2D_STD	2	QC Group, DESKTOP-LK11245

Figure 43. Reserve rule example

- And the final step is the most important part, click the “Save” button, then the rule will be written in the OPT file and Imtools will reread the lic file. Only after this step does the rule come into effect.

To make sure the rule is working, user could check status in the Imtools, use the “Perform Status Enquiry”

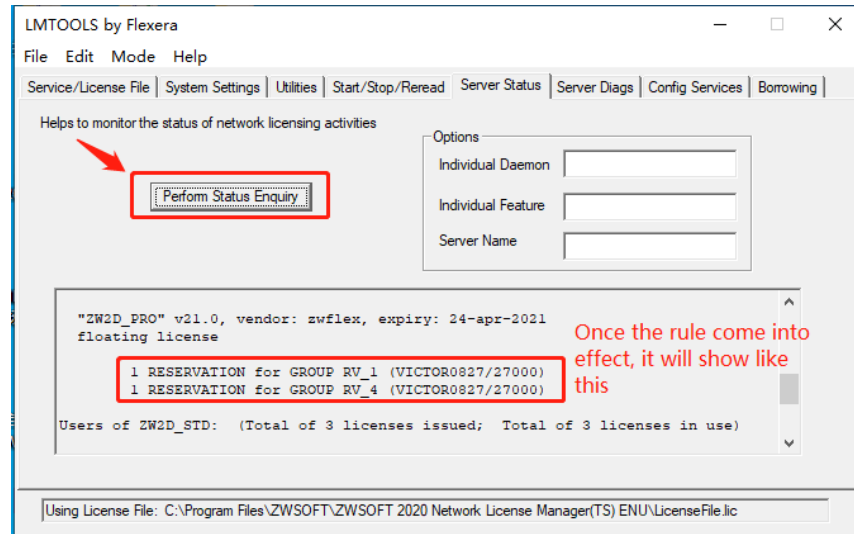


Figure 44. Check if the rule is working in Imtools

## NLAT Repair Tool

This repair tool use for setting some software internal parameter or fixing some problems. In most of time you will not use it, only when some situations happen you may open this tool. Here is the explanation for the options in the repair tool.

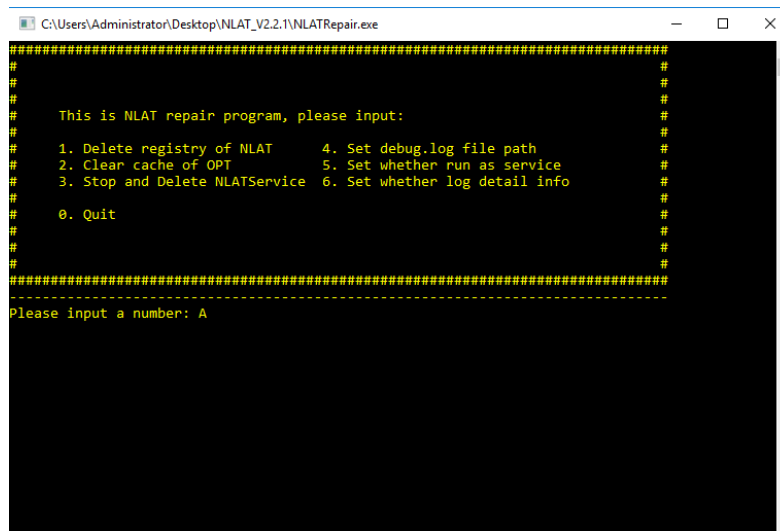


Figure 45. NLATRepair tool

**1.Delete registry of NLAT:** Delete registry information of NLAT tool.

**2.Clear cache of OPT:** If the OPT panel appears some serious problems, use this option to restore OPT panel.

**3.Stop and Delete NLAT Servicer:** Delete services which called "NLATservice" in task manager.

**4.Set debug.log file path:** Debug.log file record the denied information when users apply licenses from the server. The default path is "*C:\ProgramData\FNP\_DIR\debug.log*". If user change debug.log path, please input the new path here to make sure get the correct license denied information.

**5.Set whether run as service:** Set NLAT whether run as service, if yes it means that the software will keep running at the background even you close it.

**6.Set whether log detail info:** Set whether record the full information of licenses in the NLATlog file, generally choose this option when you are encountering some unsolved problems in NLAT tool. With details you may find the problems from the log information.

ZWSOFT PRODUCT TEAM

## Revision Note

Version	Reviser	Revise date	Revise content
1.4	Victor	2020.04.21	Add windows server edition requirement
1.5	Victor	2020.04.30	Add how to use the "group" function
1.6	Victor	2020.11.18	Add how to use the "Reserve Manager" function
1.7	Victor	2020.12.16	Add how to use "Timeout" function